

# SKYY LOFT

OWN A PIECE OF THE SKY



THE TOWER

		SQ FT
17	SKY LOFT + TERRACE	4,800
16	SKY LOFT	10,300
15	SKY LOFT	10,300
14	SKY LOFT	10,300
13	SKY LOFT	10,300
12	WORKSPACE	
11	WORKSPACE	
10	WORKSPACE	
9	WORKSPACE	
8	WORKSPACE	
7	WORKSPACE	
6	WORKSPACE	
5	WORKSPACE	
4	WORKSPACE	
3	WORKSPACE	
2	WORKSPACE	
1	WORKSPACE	
G	FILLING STATION / LOUNGE / VIP LOUNGE	2,200

46,000 sq ft

TOTAL SKY LOFT  
WORKSPACE  
(LEVELS 13-17)

THE BLOCK

		SQFT
8	CLUBHOUSE + TERRACE	7,300
7	WORKSPACE	
6	WORKSPACE	
5	WORKSPACE	
4	WORKSPACE	
3	WORKSPACE	
2	WORKSPACE	
1	WORKSPACE	
G	WORKSPACE	

LG1	ACTIVE LIFESTYLE HUB	SPACE STUDIOS	5,500
LG2	ACTIVE LIFESTYLE HUB	SPACE STUDIOS	13,600

WORKSPACE  
& LIFESTYLE  
SPACES

7,300 sq ft

CLUBHOUSE  
+ TERRACE

2,200 sq ft

FILLING STATION  
RESTAURANT

16,000 sq ft

SPACE STUDIOS  
EVENT SPACE

2,200 sq ft

LOUNGE &  
VIP LOBBY

27,700 sq ft

TOTAL LIFESTYLE  
SPACES

1-acre

PUBLIC REALM

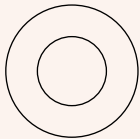
CYCLE SPACES

SHOWER ROOMS

550

65

# CIRCULAR FLOOR BENEFITS



## 360° DAYLIGHT IN

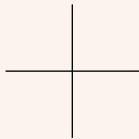
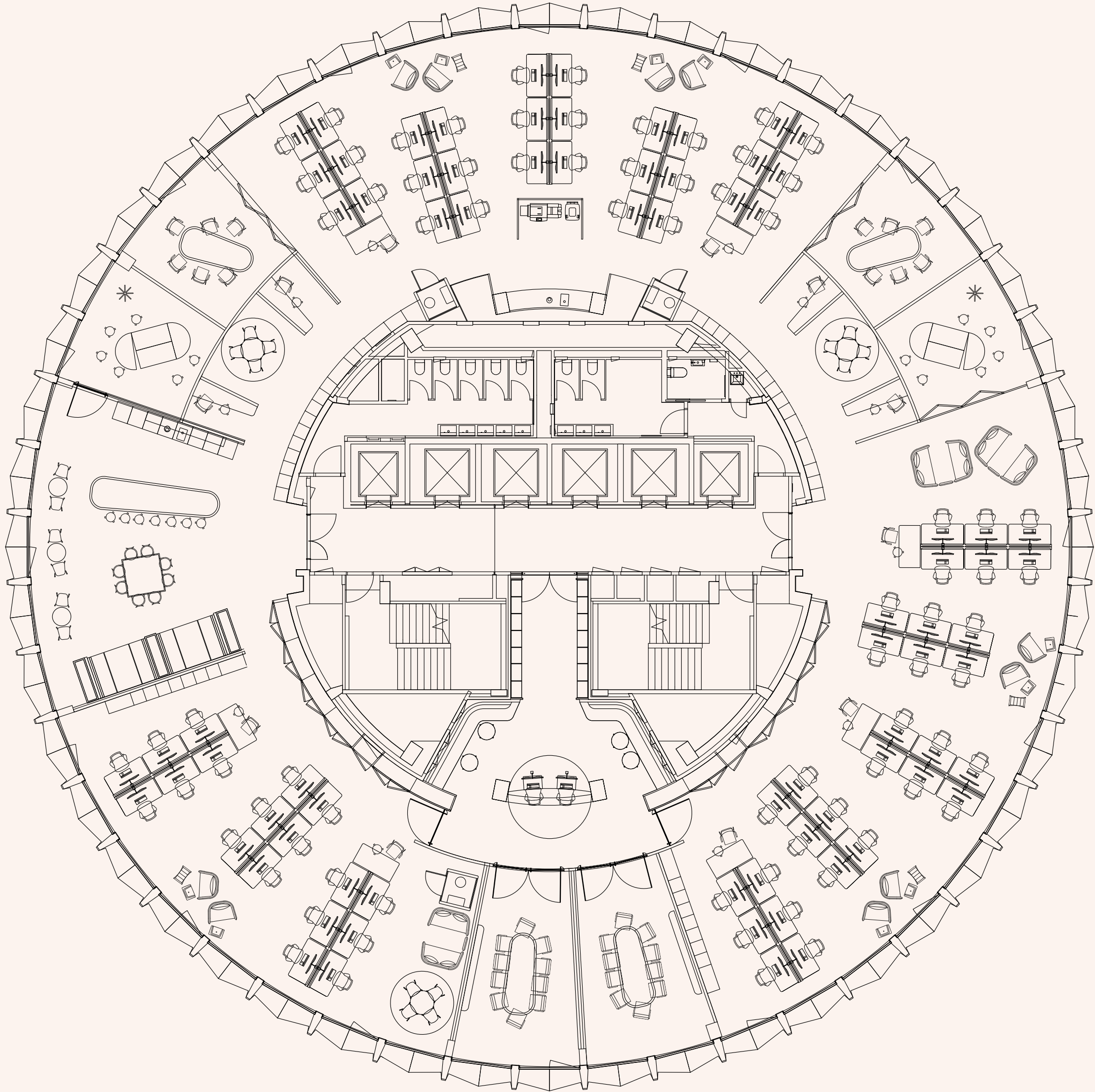
Floor to ceiling windows provide a workspace flooded with natural light throughout the day.



## 360° VIEWS IN AND OUT

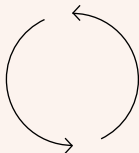
The floor to ceiling windows and Space House's central location in a conservation area combine to offer spectacular uninterrupted views of London.

You can experience the whole of London's skyline, taking time out to calm the mind and recharge throughout the day.



## EQUALLY DIVISIBLE

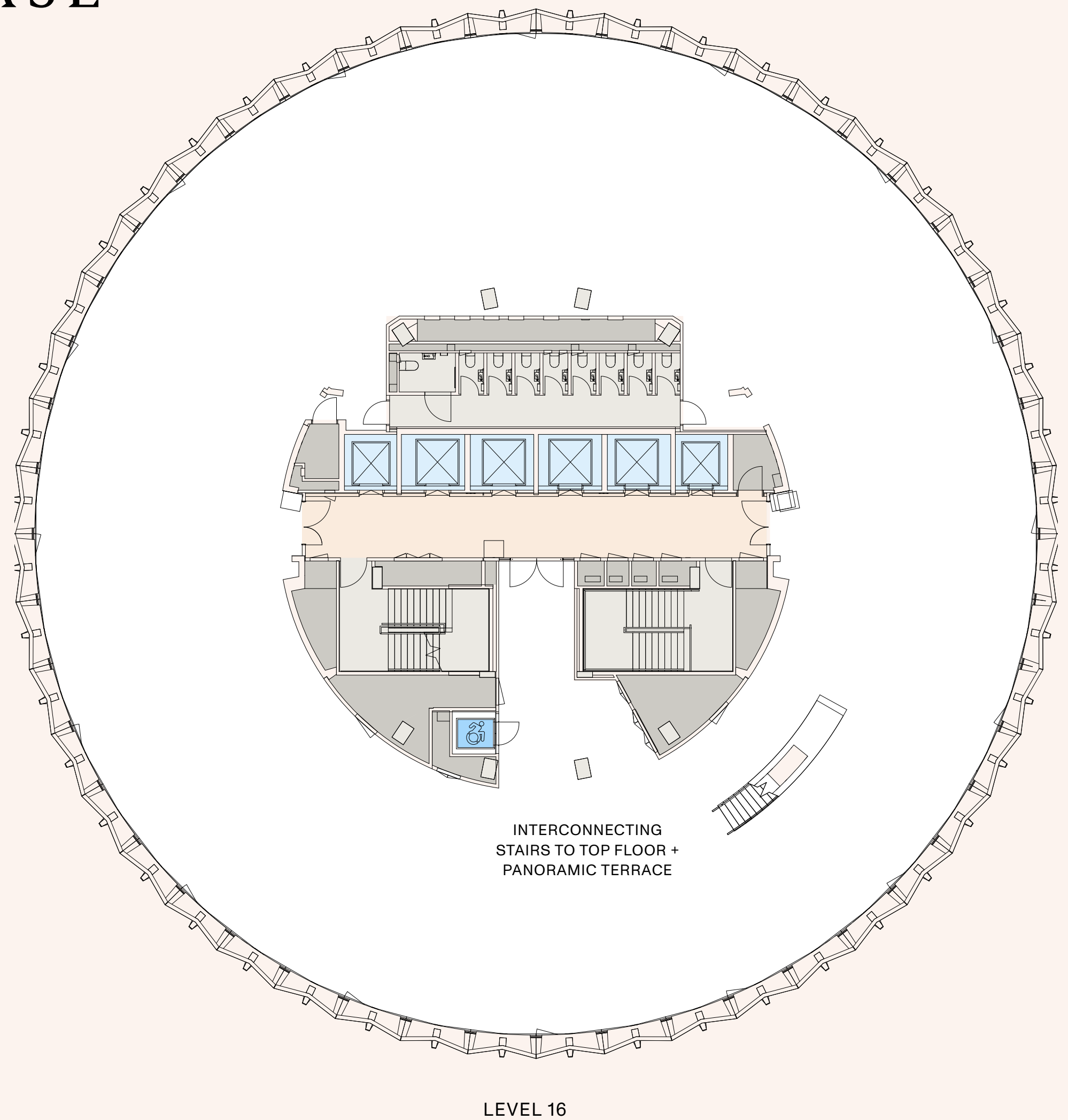
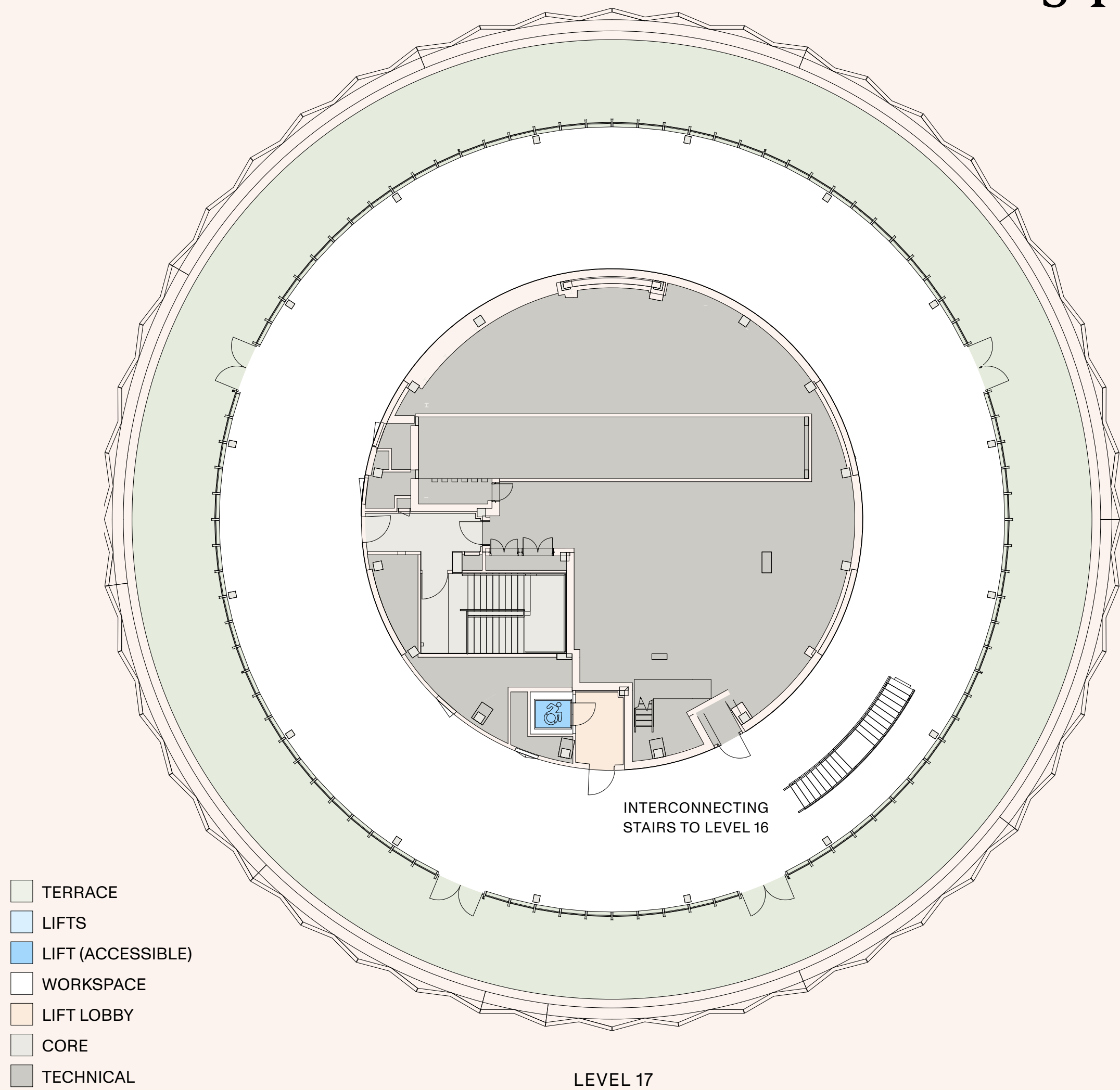
A symmetrical floor plate enables simple and straightforward space planning. Three entrances off the core also makes future subdivision easy, should business needs or cycles change.



## CONNECTED FLOW

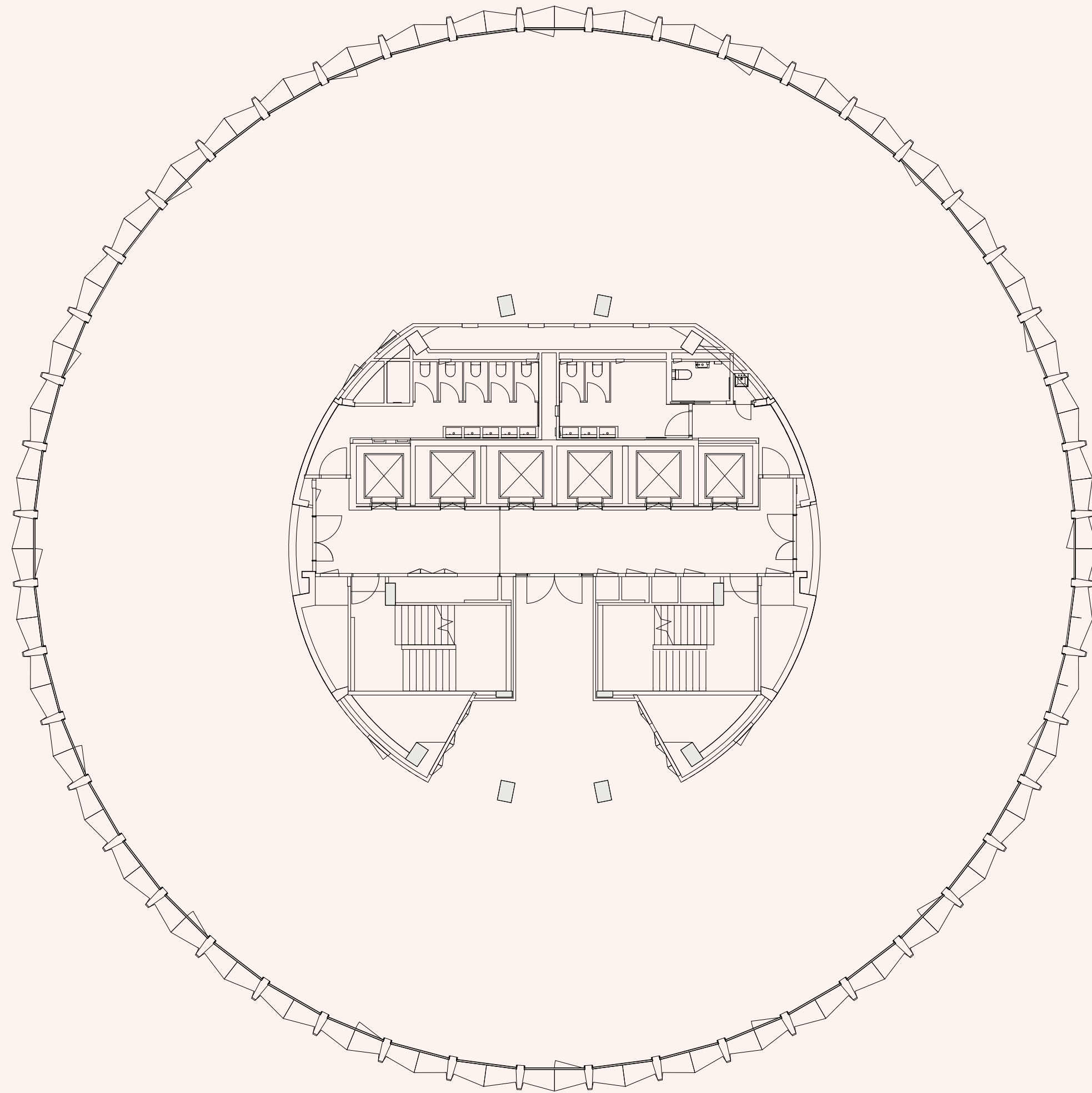
A floor plate with no hard corners, columns and unusable areas encourages natural and unrestricted fluid movement of ideas, people and groups.

# FLOOR PLATES WITH INTERCONNECTING STAIRCASE

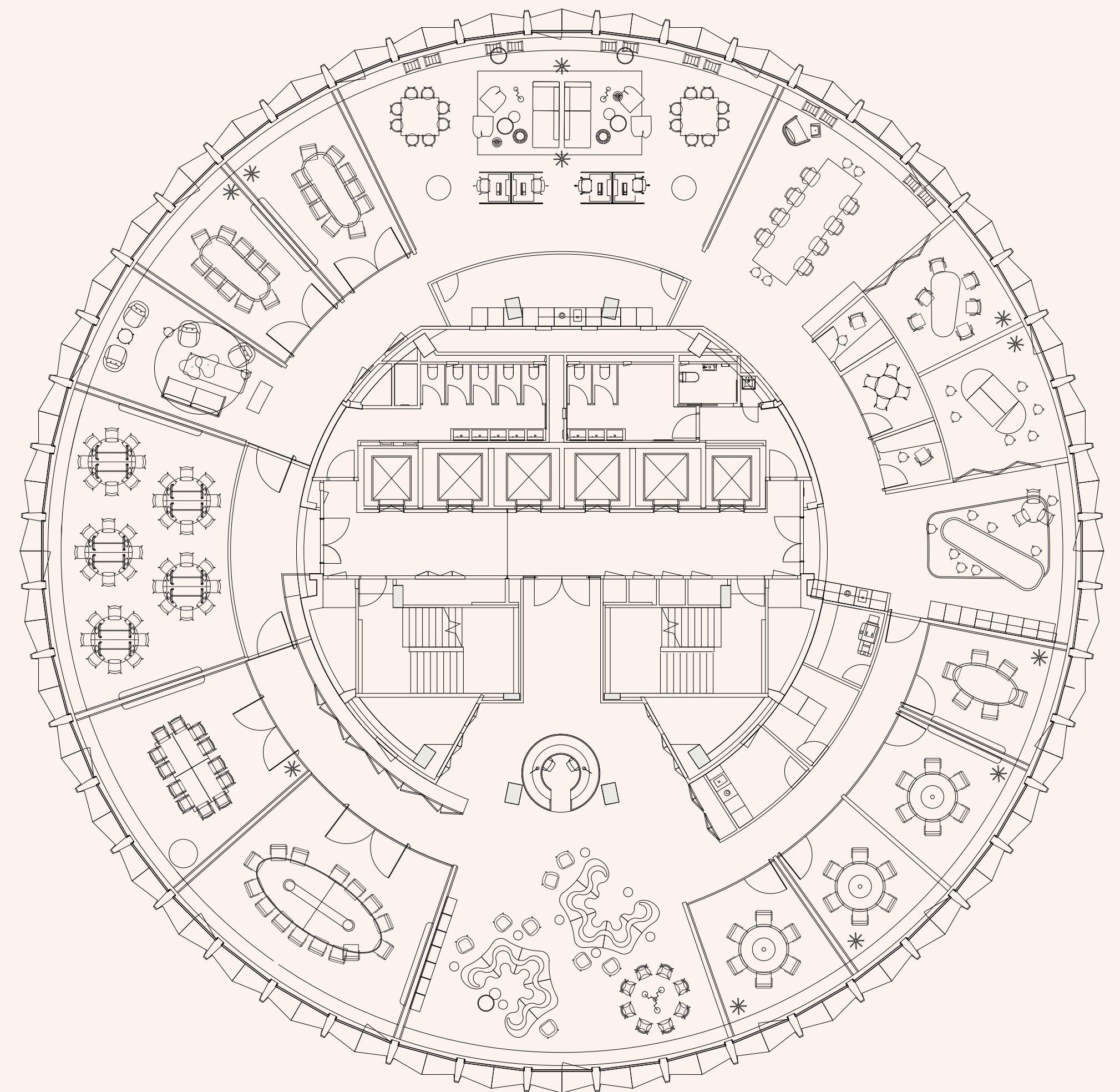




# ADAPTABLE DESIGN



TYPICAL FLOOR PLATE, LEVELS 13-15



EXAMPLE SPACE PLAN: CLIENT FLOOR